
Roosevelt DWI Program

NM Crash-Related Fatalities

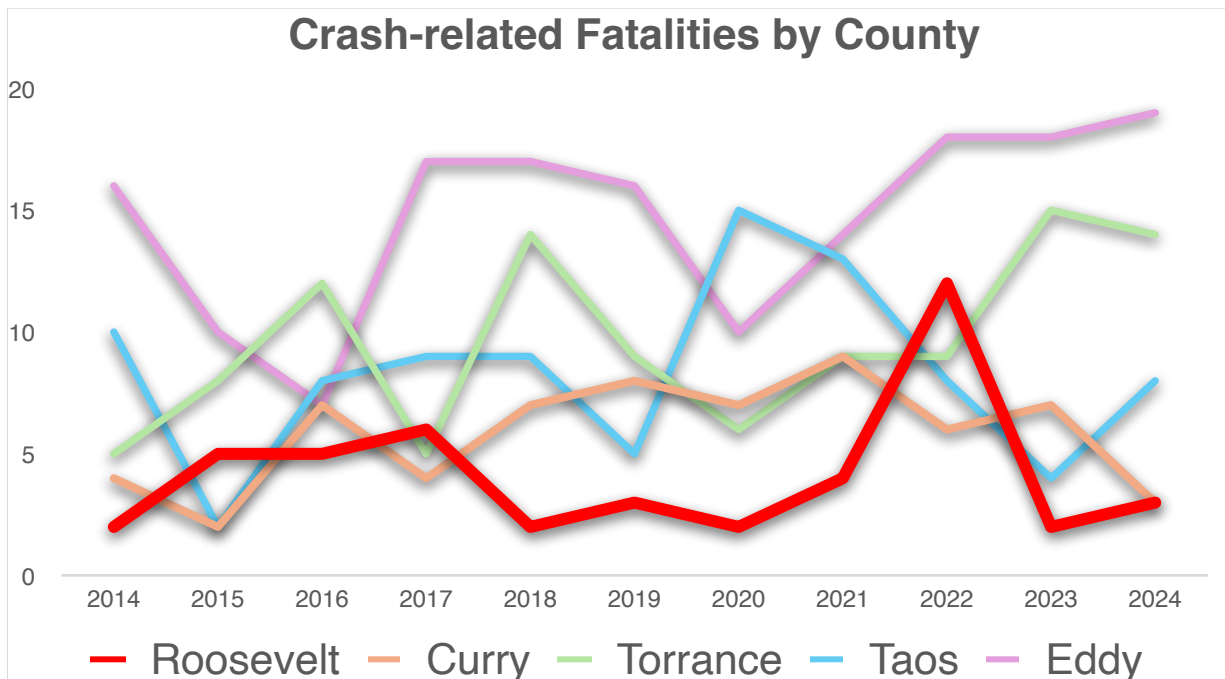
2014-2024



Overview:

The following data compares crash-related fatality rates and alcohol-related traffic fatalities from 5 counties in New Mexico from the years 2014 to 2024. The counties included in this report are Roosevelt, Curry, Torrance, Taos, and Eddy.

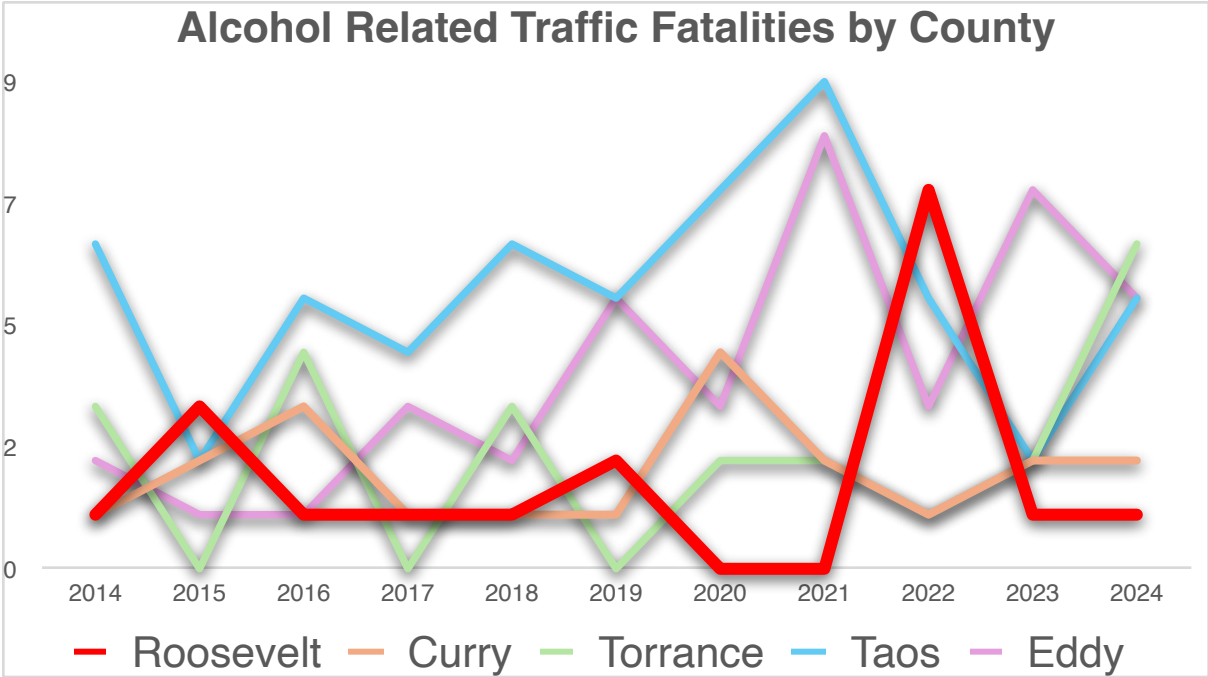
Graphed Crash-related fatality data from 2014-2024:



Crash-related fatality numbers from 2014-2024:

| Year | Roosevelt | Curry | Torrance | Taos | Eddy |
|------|-----------|-------|----------|------|------|
| 2014 | 2 | 4 | 5 | 10 | 16 |
| 2015 | 5 | 2 | 8 | 2 | 10 |
| 2016 | 5 | 7 | 12 | 8 | 7 |
| 2017 | 6 | 4 | 5 | 9 | 17 |
| 2018 | 2 | 7 | 14 | 9 | 17 |
| 2019 | 3 | 8 | 9 | 5 | 16 |
| 2020 | 2 | 7 | 6 | 15 | 10 |
| 2021 | 4 | 9 | 9 | 13 | 14 |
| 2022 | 12 | 6 | 9 | 8 | 18 |
| 2023 | 2 | 7 | 15 | 4 | 18 |
| 2024 | 3 | 3 | 14 | 8 | 19 |

Graphed Alcohol-related Traffic fatality data from 2014-2024:



Alcohol-related traffic fatality numbers from 2014-2024:

| Year | Roosevelt | Curry | Torrance | Taos | Eddy |
|------|-----------|-------|----------|------|------|
| 2014 | 1 | 1 | 3 | 6 | 2 |
| 2015 | 3 | 2 | 0 | 2 | 1 |
| 2016 | 1 | 3 | 4 | 5 | 1 |
| 2017 | 1 | 1 | 0 | 4 | 3 |
| 2018 | 1 | 1 | 3 | 6 | 2 |
| 2019 | 2 | 1 | 0 | 5 | 5 |
| 2020 | 0 | 4 | 2 | 7 | 3 |
| 2021 | 0 | 2 | 2 | 9 | 8 |
| 2022 | 7 | 1 | 1 | 5 | 3 |

| | | | | | |
|------|---|---|---|---|---|
| 2023 | 1 | 2 | 2 | 2 | 7 |
| 2024 | 1 | 2 | 6 | 5 | 5 |